

Bikes on Buses.



Get There. Faster.

Ever take the bus and wish you had your bicycle with you? *PCPT* has an exciting, mobility option for you. The Bikes on Buses program. Enjoy the convenience of taking your bike with you anywhere *PCPT* travels. Explore areas you could never get to by bike alone. It's an easy, safe and convenient way to combine your bike ride with a bus trip and venture through Pasco County and beyond.

Take Your Bike Along for The Ride.

Whether you use your bike for transportation, recreation or to commute to work, the Bikes on Buses Program is just the ticket to extend your mobility.

There is no charge for the service and no permit is required. However, optional training is available to those who are unfamiliar with the bike racks, and can be obtained at several convenient locations. We serve walk-ins and can accommodate appointments. To find out where you can obtain training in your area, and for hours of operation, please call PCPT at one of the following numbers:

West Pasco: (727) 834-3322 • East Pasco: (352) 521-4587 • Central Pasco: (813) 235-6073
TTY Access: 1-800-338-5430



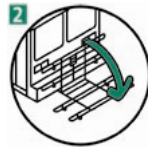
Rack and Roll.

Getting Your Bike On and Off the Bus is Easy. Just Follow These Simple Steps:



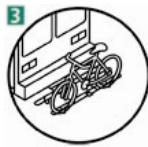
SQUEEZE

- As the bus approaches, have your bike ready to load.
- Remove all loose items.
- Always approach the bus from the curbside.
- Squeeze the handle to release the lever.



LOWER

- Lower the rack with one hand.
- The rack will lock in the down position.



LOAD

- Lift your bike into the available wheel well.
- Place your bike in the empty position nearest the bus.
- Each position is labeled for front and rear wheel.



SECURE

- Lift the support arm up and over the front tire.
- The support should rest on top of the tire – not the fender or frame.
- A spring pulls the arm back and holds the bike securely.

- If the bike rack is inoperable, notify the driver and wait for the next available bus.
- If the rack is full, please wait for the next available bus.
- Always return the empty rack to the upright position.



Rules of The Road:

It is the responsibility of the cyclist to read and comply with the following:

- The bike racks are designed to hold a specific number of bicycles. Some buses can accommodate three bikes, while others can only hold two. The rack cannot be overloaded. No bicycles will be allowed inside buses.
- Only single-seat, two-wheel bicycles are permitted on buses; motor-powered vehicles are not allowed. Bikes as small as 16" will fit the bike rack.
- PCPT is not responsible for damage to the bicycle or any other property connected with the bicycle, except in the event that PCPT is found to be negligent or at fault in the accident. Theft, damage, injury during loading and unloading, acts by third parties, and all other related incidents are solely the responsibility of the patron/cyclist and not PCPT.

