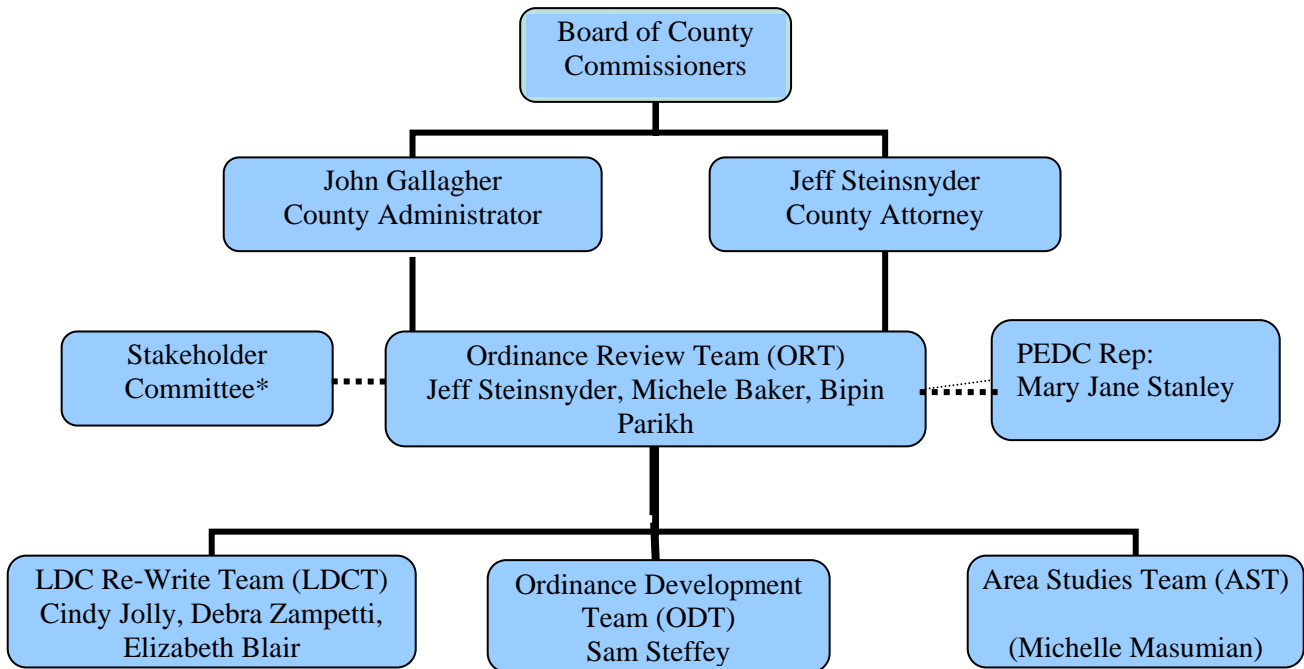


Organization for Re-Write of LDC and
Development of Ordinances Required by Comp Plan



*Stakeholder Committee

The Stakeholder Committee will be composed of community representatives representing the County's business partners and customers.

1. Agricultural Business – Wilton Simpson, Simpson Farms
2. Business – Jim Guidry, Dade City Business Center
3. Commercial Developer – *Mike Hogan resigned – REPLACEMENT NEEDED*
4. DRI Developer – Frank Starkey, Starkey Ranch
5. Engineer – Pat Gassaway – Heidt and Associates
6. Environmentalist – Dave Sumpter, Wildlife Biologist
7. Home Builder – Barry Karpay, Standard Pacific Homes (also ULI District Council member)
8. Land Planner – Liz Abernethy, Wilson Miller
9. Land Use Attorney – Ben Harrill, Figurski and Harrill, PA
10. Landscape Architect – Pat Roberson
11. Planner – King Helie
12. Realtor – Dewey Mitchell, Prudential Tropical Realty
13. Transportation Planner – Elton Smith, Wilson Miller
14. Representative from CORC – *Steve Booth resigned – replaced with Jon Moody*
15. Representative from NE Rural Group – John Vogel
16. Representative from PBA – Elizabeth Lyon-Hall, King Engineering
17. Citizen at Large – *Jon Moody was reassigned to the CORC position – REPLACEMENT NEEDED*

Ex-officio: Rhea Law, Fowler, White and Boggs, P.A.